

EV10 High Speed Fuse



10X38 高速熔断器 10X38 High Speed Fuse



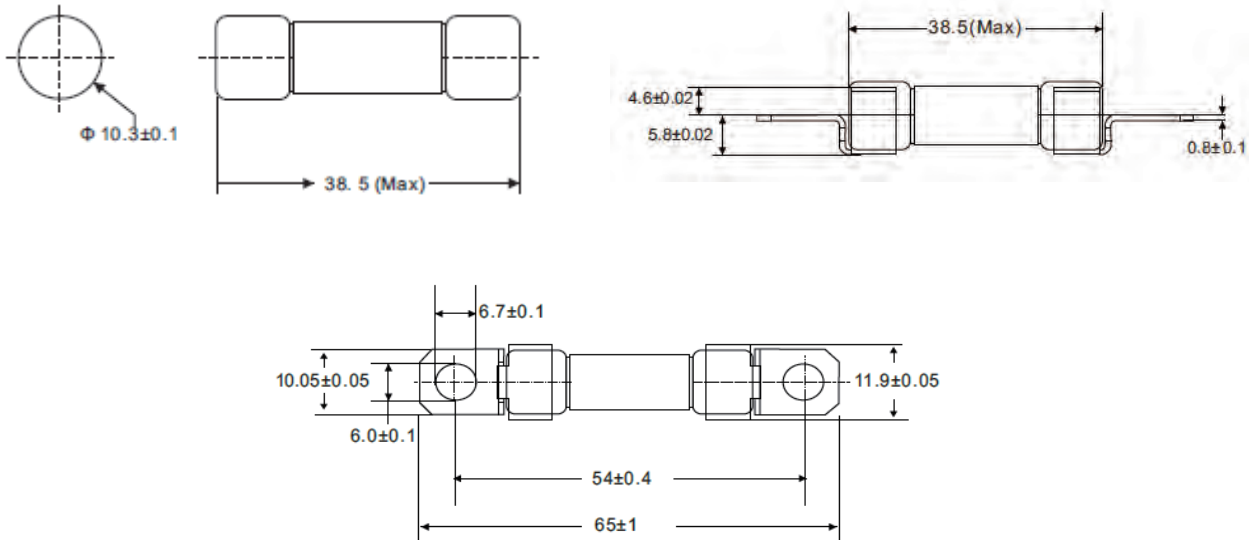
工作温度:
Operating Temperature:
-55°C ~ +125°C

材料:
Materials:
Terminals: Tin plated copper
Tube: Ceramic Tube
Element: Silver alloy
Filler: Silica Sand
Cap: Tin plated copper

电气特性: Electrical Characteristics

| 额定电流的% % of Ampere Rating | 熔断时间 Opening Time |
|------------------------------|-------------------|
| 100% | 4 Hours Min. |
| 200% | 300 Seconds Max. |

尺寸/Dimension:



目录编号及规格/Catalog No. and specification:

| Type | 目录编号 Catalog No. | Rated Voltage | Current Range | Interrupting Rate | Certification | Certificate Status |
|-------|------------------------|------------------|------------------|----------------------|---------------|-----------------------|
| DC/AC | EV10V200 | 200VDC/AC | 5-60A | 15KA@200VDC | UL | ○ |
| | EV10V500 | 500VDC/AC | 5-50A | 10KA@500VDC | UL | ○ |
| | EV10V600 | 600VDC/AC | 5-32A | 10KA@700VDC | UL | ○ |
| | EV10V700 | 700VDC/AC | 5-32A | 10KA@700VDC | UL | ○ |

Note: "○" means certificating on going;"●" means certificated